



Franklin County Litter Map “How-To”

The Franklin County Litter Map is built on ArcGIS’ Story Map platform. This allows you to upload a picture and some information about a litter cleanup you participated in and put that data on a map. The end result is a map populated with several litter cleanups and some exciting stories about how folks are making a difference in their community.

The following information is intended to give you an overview of how to use the Story Map software to upload your data or to browse what is already uploaded.

1. Introduction

You can access the Franklin County Litter Map by following a link (<http://bggreensource.org/franklin-county-litter-mapping/>), through the Franklin County Solid Waste Management webpage, or by using your smartphone or tablet to scan the QR code to the right.

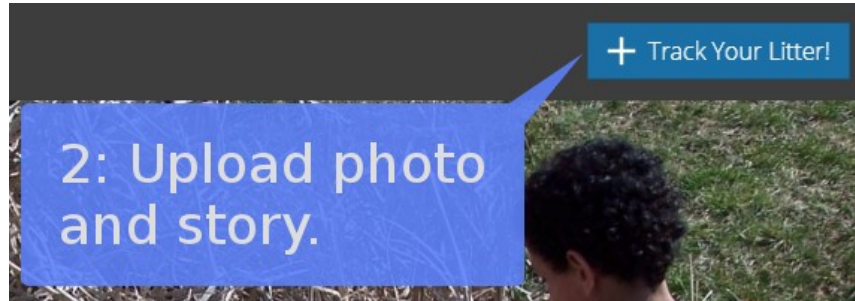


2. Launch Page

At the launch page, you will have two main options for proceeding. The first is to click the circular button at the bottom of the page that says “Check it out!” This will take you to the map (which is centered on Franklin County) and the photo/story gallery.

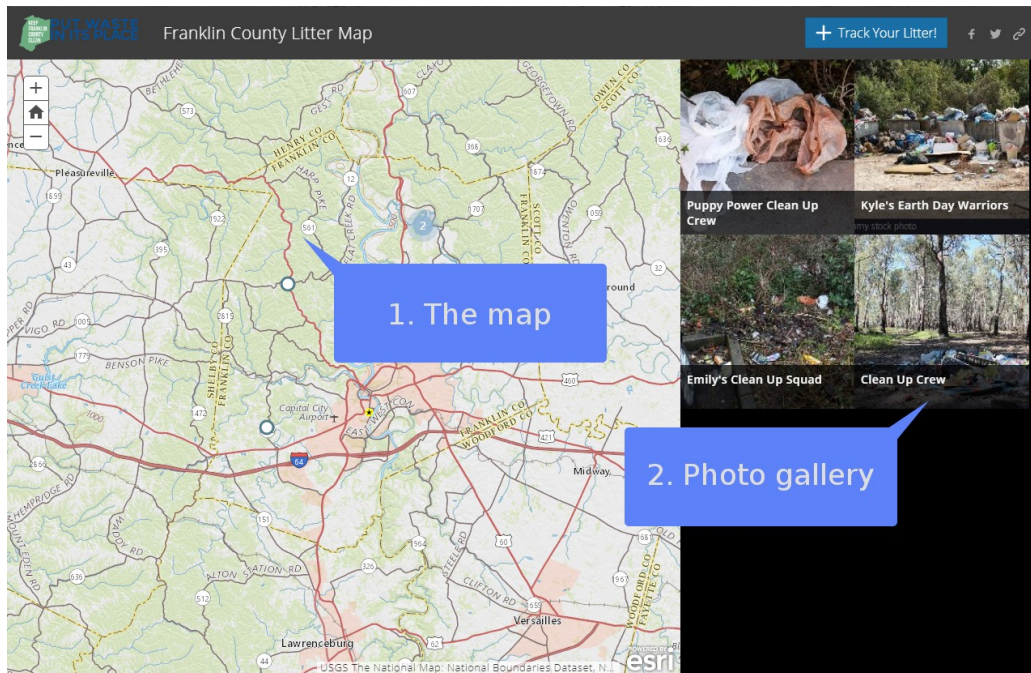


The second option is to go ahead and upload a picture and story by clicking the rectangular button in the top right of the page that says “+ Track Your Litter!”



3. The Map & Gallery

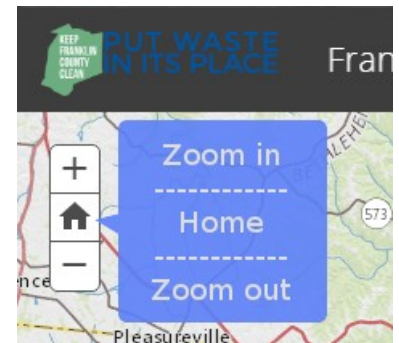
When following the “Check it out!” button, you will be taken to a page divided into two parts: a map and a photo gallery.



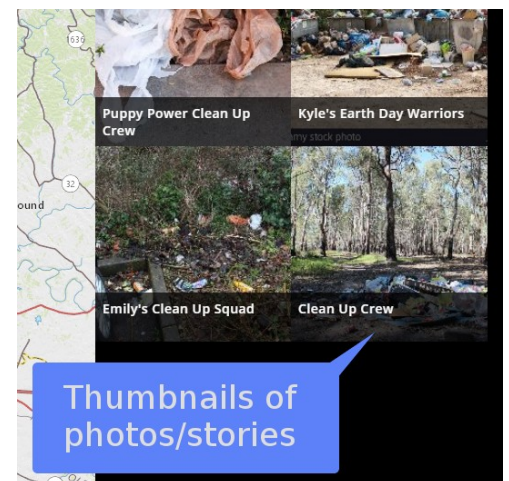
The map is centered on Franklin County and will contain a number of circular data points. The data points may be individual instances or clusters of data points with a number inside them. The clusters with numbers will separate into individual instances as you zoom in on the map.



Depending on the device you are using to access the map, you can zoom in by scrolling up and down on a mouse or trackpad or by using two fingers to pinch or spread on a tablet. Alternatively, the '+' and '-' buttons in the top-left of the map will zoom in and out. The home icon will return you to the starting position of the map.



The photo gallery will contain a number of photo thumbnails with titles of organizations or events. You can click on the thumbnail in order to access a larger version of the photo and details about the litter cleanup.



Note that the gallery will only display photos that correspond to visible data points on the map. In other words, if you have zoomed in on a specific area, you will only see the photos from that particular area of the map. In order to see all of the photos in Franklin County, you can do so quickly by hitting the home button to return to the default zoom level and location.

4. Sharing a Story

In order to contribute to the gallery and share your litter cleanup story, click the “Track Your Litter!” button. You can either browse your phone or computer’s file system for a photo or drag and drop a photo into the box.

In addition to the photo, there are a number of required fields that need to be populated before you can submit it. These include the name of the group or organization that did the litter cleanup, the location of the cleanup, and a description of the cleanup. If you are using your smartphone and you have GPS enabled, your phone can determine your location and use those coordinates. Otherwise, you can find the location on the map.

The description field prompts you to describe how you made a difference through your cleanup. You might describe your group, what you found, how you made an impact, and any other thoughts about the cleanup. This is intended to be a space to share your story and give folks a look at the exciting work you accomplished.

Once you have submitted a photo and story, it will not be published in the gallery until an administrator has approved it. This helps us ensure the quality of story submissions.



Use a different photo

Group or Organization *

Location of Litter Cleaned Up *

Locate Me
 Find on Map

How did you make a difference today *