

# KENTUCKY STATE COST SHARE PROGRAM

PRESENTED BY VALERIE TIPTON, DISTRICT TECHNICIAN

BOURBON COUNTY CONSERVATION DISTRICT



**THIS PROGRAM WAS ESTABLISHED IN 1994 TO PROTECT  
THE SOIL & WATER RESOURCES OF KENTUCKY**

YOU CAN SIGN UP IN YOUR LOCAL CONSERVATION DISTRICT OFFICE. APPLICATIONS ARE ACCEPTED CONTINUOUSLY  
WITH PERIODIC RANKING AND FUNDING.

## LIVESTOCK EXCLUSION

- FENCING ENVIRONMENTAL SENSITIVE AREAS SUCH AS PONDS & SPRINGS
- BENEFITS INCLUDE:
  1. IMPROVED WATER QUALITY
  2. REDUCED EROSION AROUND POND
  3. INCREASED LIFE SPAN OF POND
  4. HERD HEALTH





## COST SHARE IS AVAILABLE TO FENCE PONDS AND PROVIDE ALTERNATE WATER SOURCES





## LIVESTOCK EXCLUSION

- FENCING STREAMS
- BENEFITS INCLUDE:
  1. IMPROVED WATER QUALITY  
WITH A GREAT IMPACT ON  
DOWNSTREAM WATERS
  2. REDUCED STREAMBANK  
EROSION
  3. HERD HEALTH
  4. ESTABLISHMENT OF RIPARIAN  
ZONE



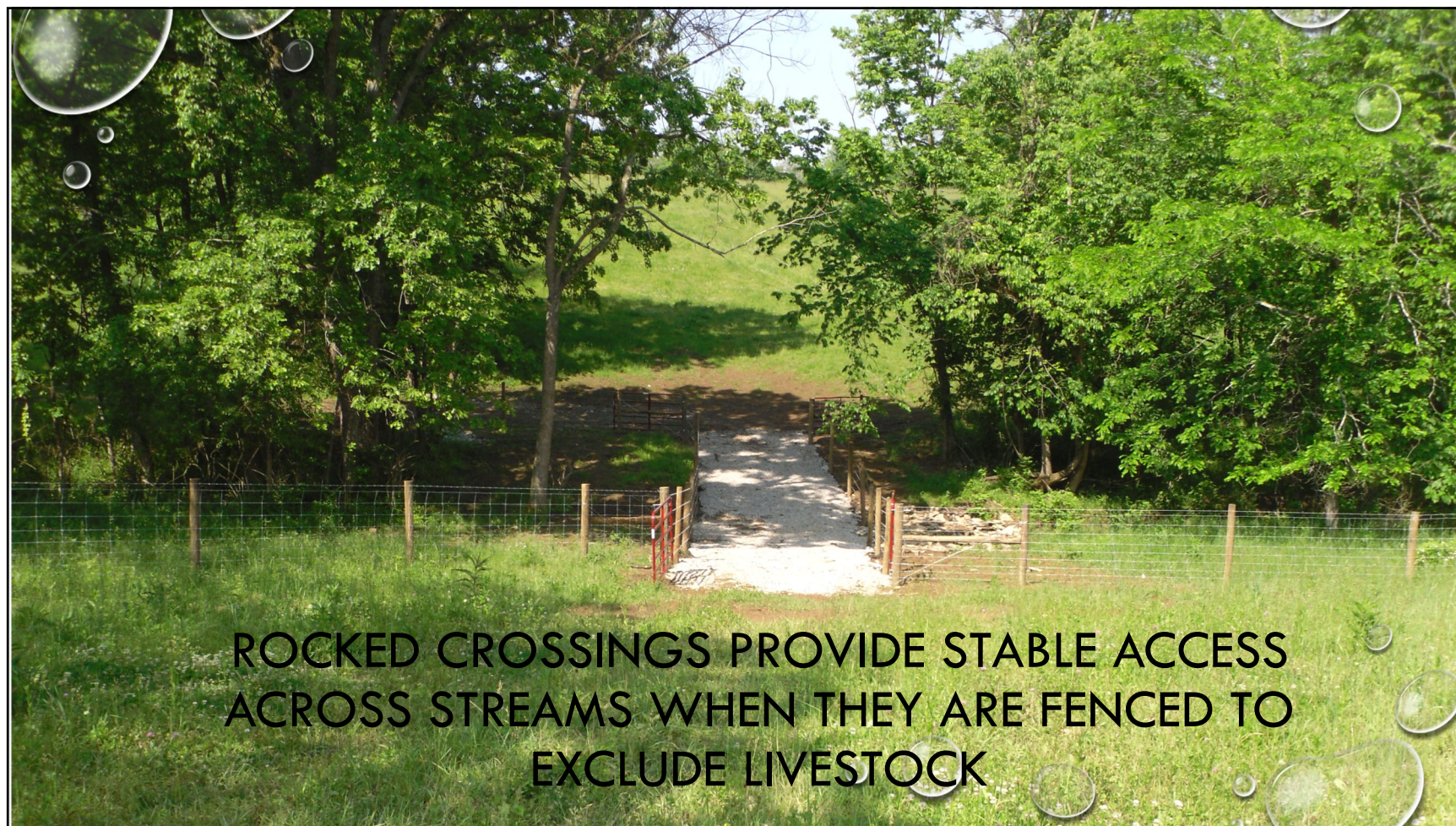


**FENCING LARGER STREAMS LIKE BLACKS CREEK WITH  
HIGH TENSILE FENCING CREATES A RIPARIAN ZONE**

## SMALLER STREAMS CAN BE FENCED USING WOVEN WIRE FENCE









PERMANENT LIVESTOCK WATERERS ARE INSTALLED TO  
PROMOTE ROTATIONAL GRAZING AND TO PROVIDE AN  
ALTERNATIVE WATER SOURCE IF STREAMS OR OTHER  
WATERS ARE FENCED OFF

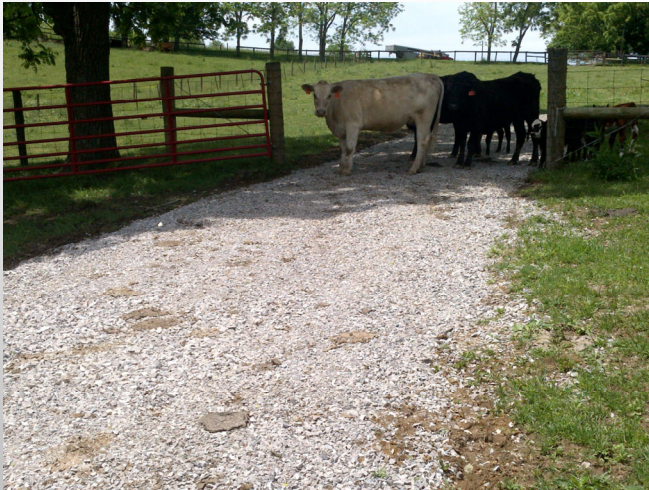


## CROSS FENCING PASTURES PROMOTES PROPER GRAZING USE





## HEAVY USE AREAS FOR GATEWAYS AND FEED PADS ARE PRACTICES THAT SUPPORT ROTATIONAL GRAZING





## THE IMPORTANT THING TO KNOW IS THAT IF YOU HAVE A PROBLEM ON YOUR FARM, WE WANT YOU TO CONTACT US FOR ASSISTANCE

- YOU WILL NEED TO HAVE A FARM NUMBER WHICH IS AVAILABLE THROUGH THE FARM SERVICE AGENCY. IF YOU DO NOT HAVE A FARM NUMBER IN YOUR NAME, YOU WILL NEED TO BRING IN A COPY OF YOUR DEED
- YOU WILL NEED A KENTUCKY AGRICULTURE WATER QUALITY PLAN THAT IS LESS THAN 3 YEARS OLD