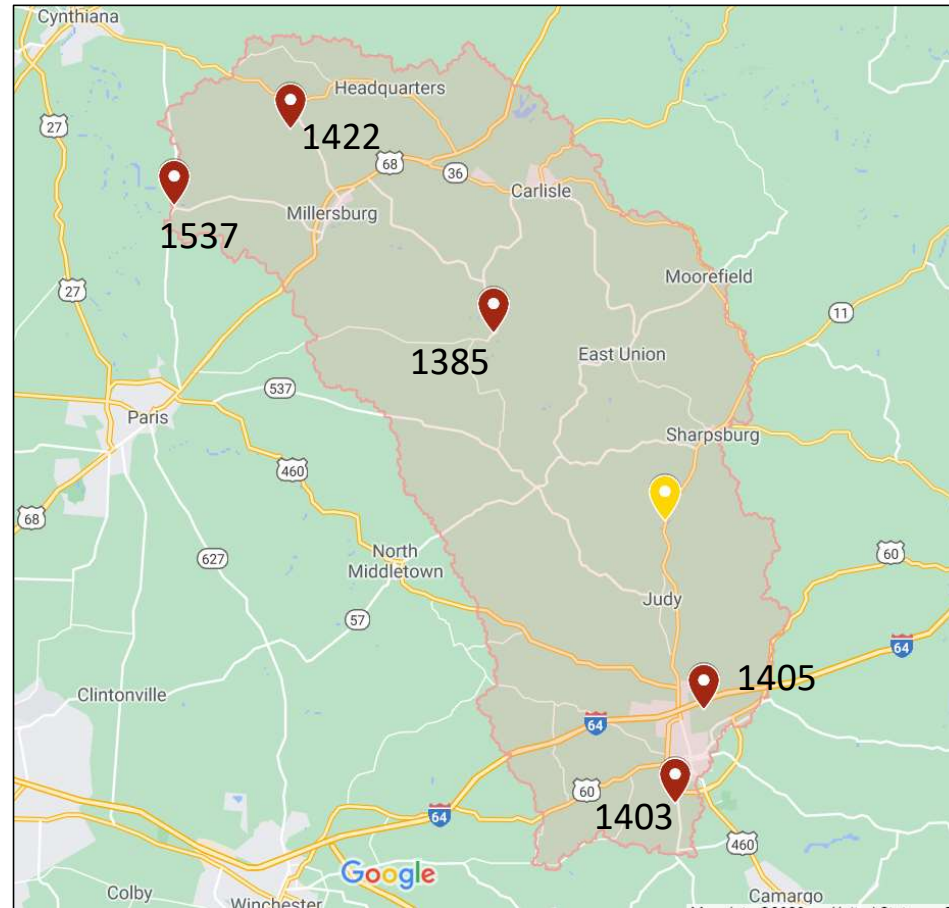




2020 Hinkston Creek Watershed Sampling Sites



-  LRWW Sites
-  Nutrient Pilot Study

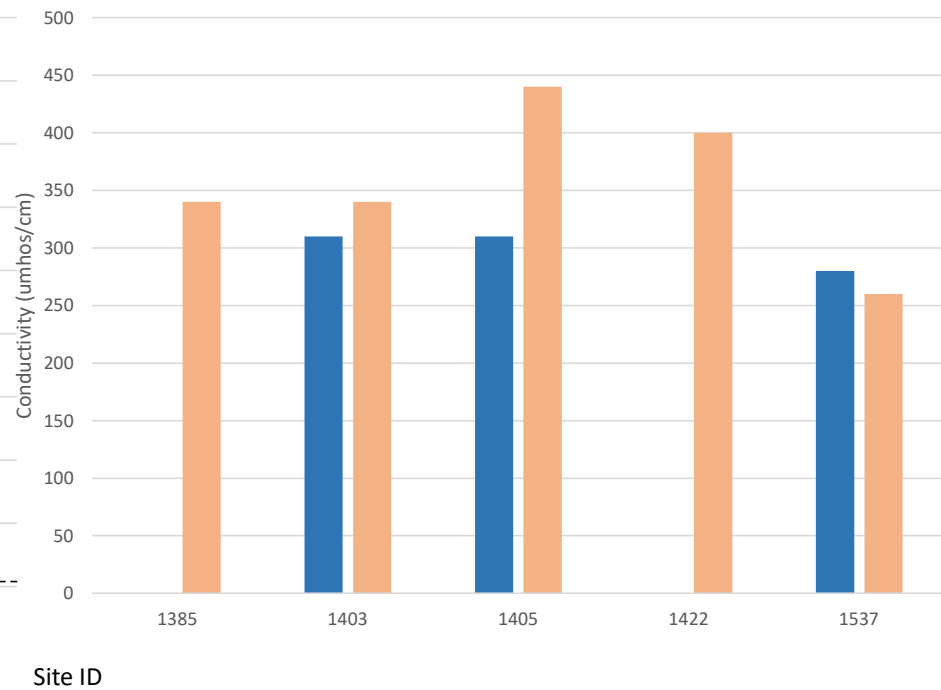
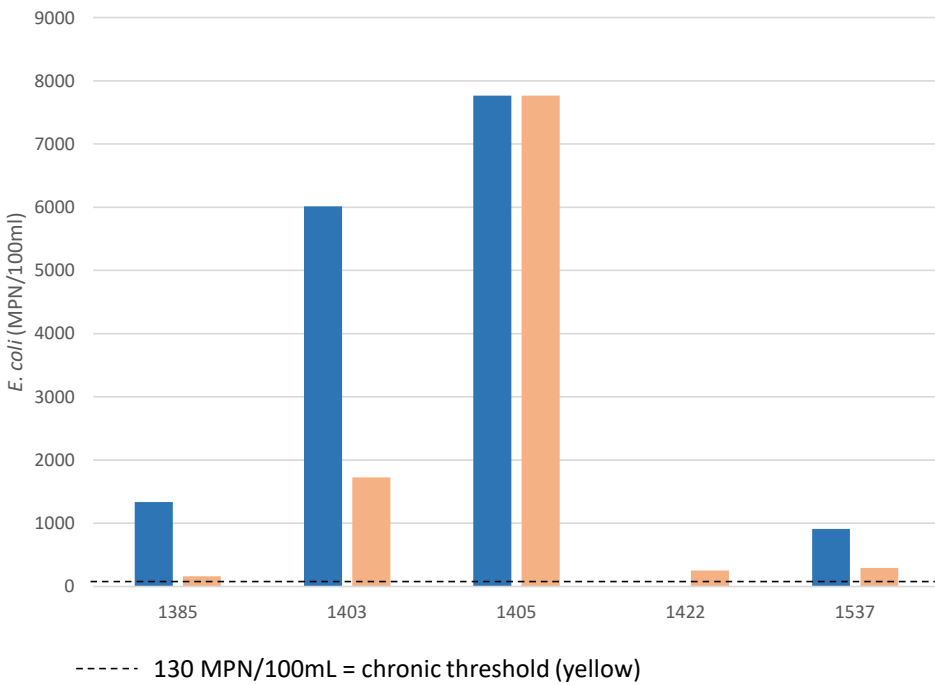


2020 Hinkston Creek Watershed Sampling Results

July
September

E. coli

Conductivity

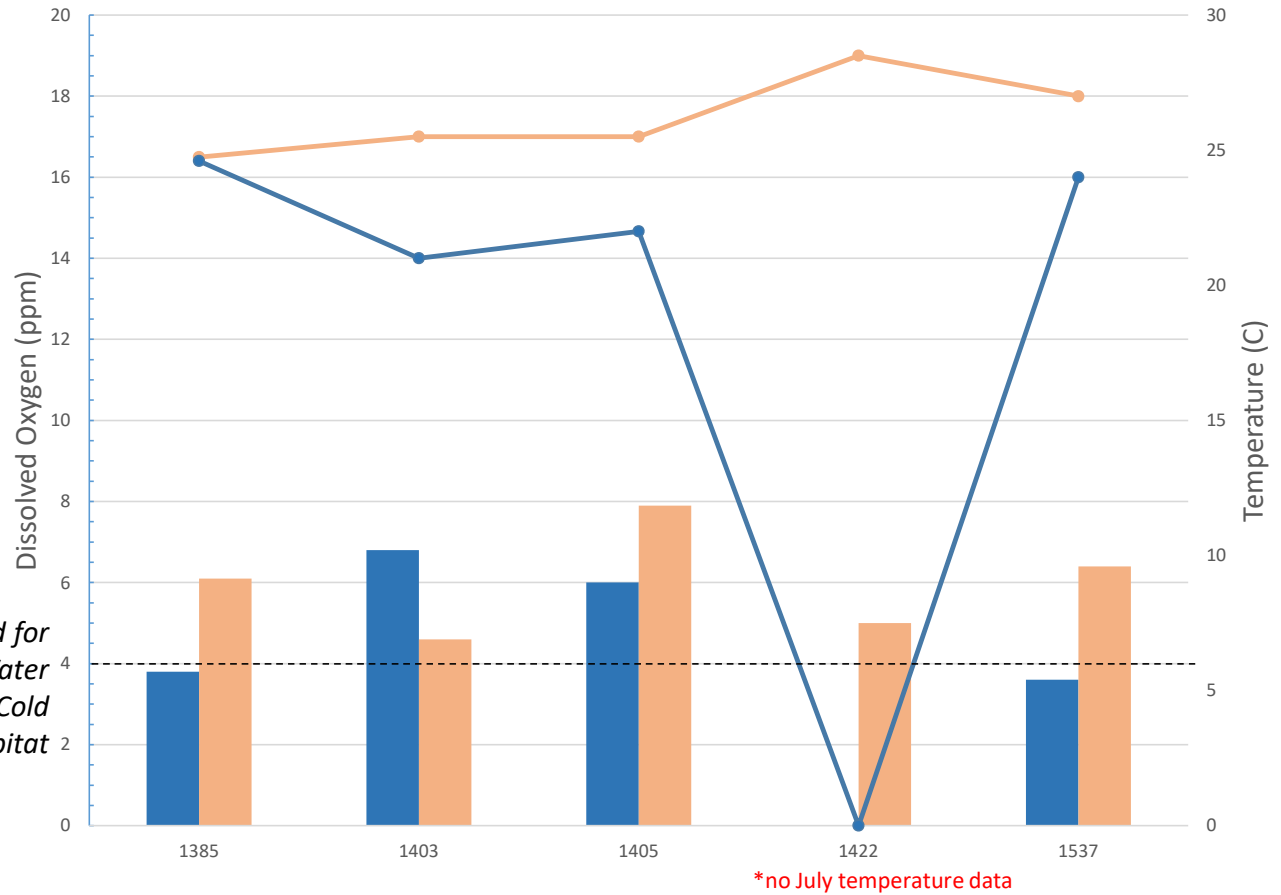




2020 Hinkston Creek Watershed Sampling Results

- July DO
- July Temperature
- September DO
- September Temperature

4.0 ppm = minimum threshold for instantaneous DO (Warm Water Aquatic Habitat); 5.0 ppm for Cold Water Aquatic Habitat





2020 Hinkston Creek Watershed Sampling Results

Normal range: 6-9 0 = clear 3 = turbid 3 = normal

Site ID	pH		Turbidity		Flow	
	July	Sept.	July	Sept.	July	Sept.
1385	7.5	7.5	3	0	3	2
1403	7.5	7.7	3	0	3	2
1405	7	7.5	3	0	3	2
1537	8	8	-	1	-	3
1422	-	7.5	-	1	-	2