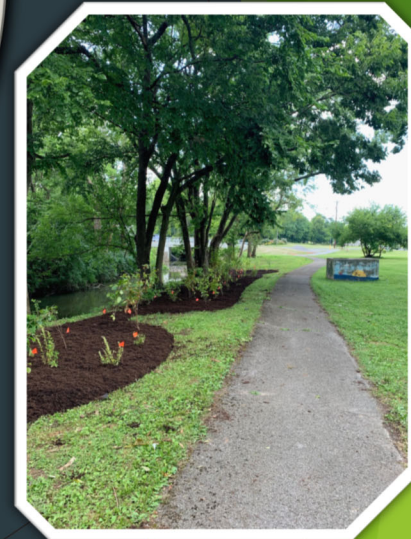
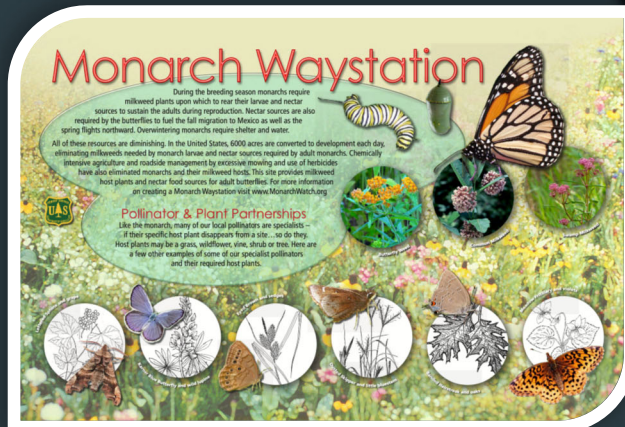


Danville Boyle County Trails Alliance Update



November
2019

- ▶ Clark's Run
Corridor
Michael E Smith
Park (2nd St)
to Henson Pond
(E. Main St.)



McClure Village Trailhead

► This trailhead is approximately half way from Michael E Smith the Stanford Rd. There will be parking, rain garden, kiosk with maps and bench and Educational signage will be added for the rain garden, lagoon, and landfill. Additoanl directional signage will be placed at 2nd st, 3rd st.





Henson Trail

Educational signage will also be added to the sewer lagoon. Henson Park is an under utilized green space that will remain a focus for upgrades. Safety signs will also be added for trail users for crossing Stanford Ave.

Educational and Directional Signs



CLARK'S RUN TRAILHEAD WELCOME!

A word about our partners:
In 2018, Kentucky Home for Aged and Infirm Deaf, Inc. (KHAID), donated the area for this trailhead as a perpetual easement to the City of Danville.

The collection of funds for the construction of a facility for elderly deaf began in 1927 and was originally known as The Home Fund. Contributions from alumni and from annual fundraising events by students continued through 1996. In 1998 KHAID broke ground for the construction of the nearby KSD Village Apartments.

This project would not have been possible without the generous donations for construction and materials from **The Allen Company** and **Caldwell Stone**.

**THANK YOU
TO OUR
PARTNERS**



City of Danville Public Works Department
Danville/Boyle County CVB
Danville/Boyle County Trails Alliance
Clarks Run Environmental and Education Corporation
Kentucky Department for Public Health
Central Seal
Danville Boyle County Trails Alliance

CLARK'S RUN TRAILHEAD WELCOME!

Clark's Run Trailhead Rain Garden

Every time it rains, water runs off hard surfaces, such as roofs or driveways, collecting particles of dirt, fertilizer, chemicals, oil, garbage, and bacteria along the way. The US EPA estimates that this pollutant filled rainwater runoff accounts for 70% of all water pollution in nearby streams. A rain garden aims to collect runoff to slow the flow into nearby streams and allow water to seep into the soil recharging groundwater aquifers. These processes also help filter out pollutants by using plants native to the area. Rain gardens area effective in removing up to 90% of nutrients and chemicals and up to 80% of sediments from the rainwater runoff. Rain gardens only hold water for 12-48 hours and do not contribute to breeding of mosquitoes or other pest

Danville Boyle County Trails Alliance

CLARK'S RUN TRAILHEAD WELCOME!

Clark's Run Trail Etiquette

KEEP RIGHT
PASS ON THE LEFT
DON'T BLOCK THE TRAIL
BE RESPECTFUL OF PRIVATE PROPERTY
CLEAN UP LITTER
CLEAN UP AFTER PETS
PETS MUST BE ON LEASH AT ALL TIMES

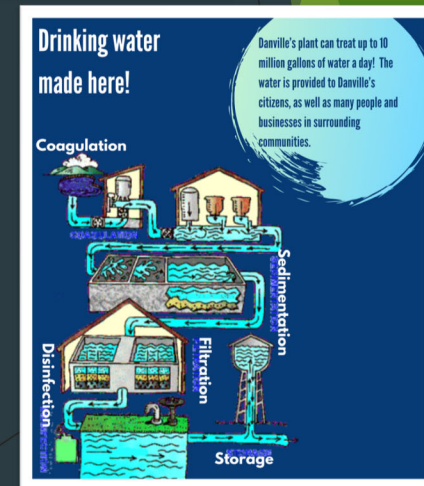
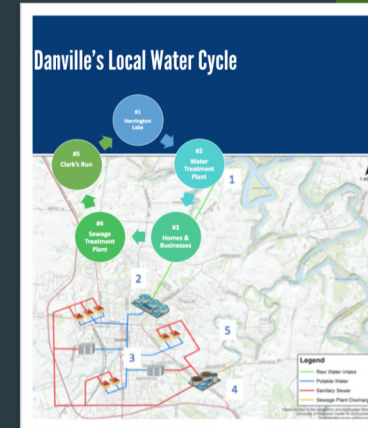
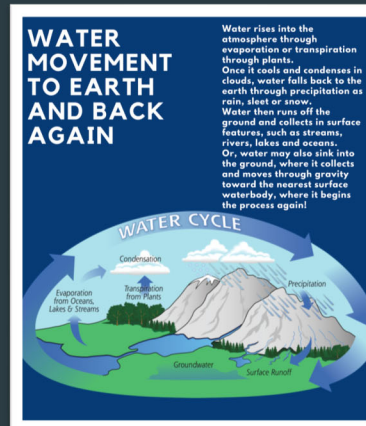


Danville Boyle County Trails Alliance

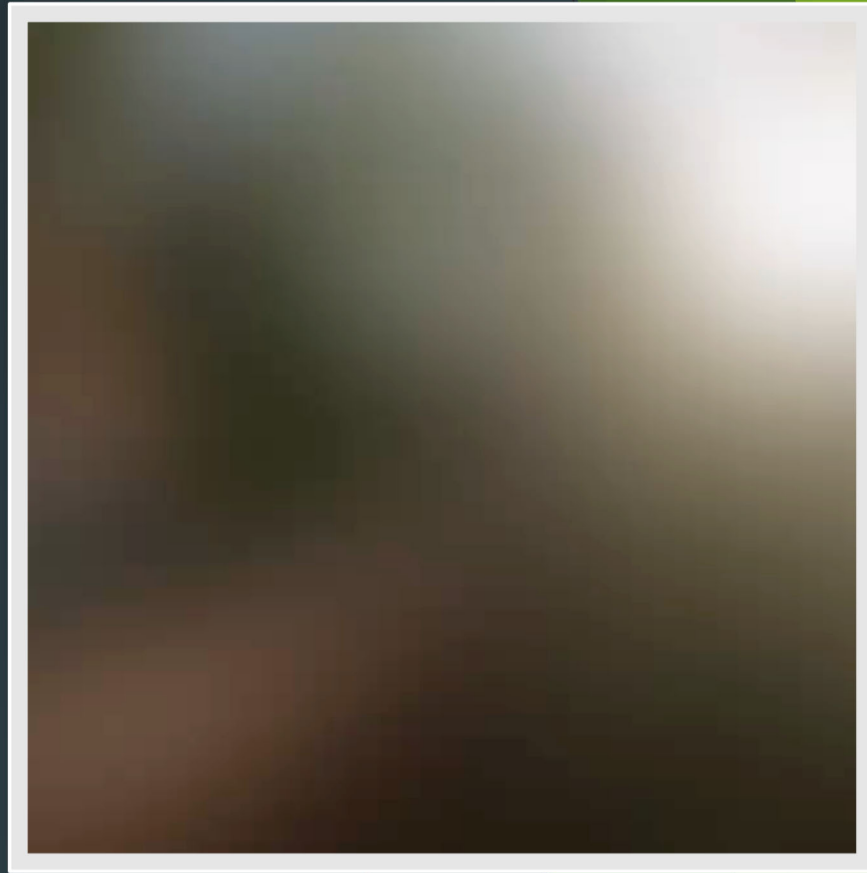


Lexington Ave Waterplant Park

- Educational signage will be added to explain the water cycle from macro environment to local sourcing and production.
- Feedback on design and amount of information needed to support educational experience.



Woven Wire Mountain Bike Park/ Urban Hiking Trail



2168 Connector Trail

Gentry Lane

To KY 33

TAP grant through
BC Fiscal Court
coming late
Summer/early Fall



Thank You to Our Team

City of Danville
Boyle County Fiscal Court
Boyle County Industrial Foundation
Danville Boyle County Convention and Visitors Bureau
LG&E and KU
Clark's Run Environmental Education Corp. (CREEC)
Kentucky Department of Local Government
Danville Boyle County Economic Development Partnership
Centre College
Bluegrass Technical and Community College
UK Extension Office
Danville Boyle County Parks and Recreation
Boyle and Danville School Systems
Boyle County Health Department
Safe Routes to Schools

